



ISLAM

AP World History Notes
Chapter 11

The Homeland of Islam

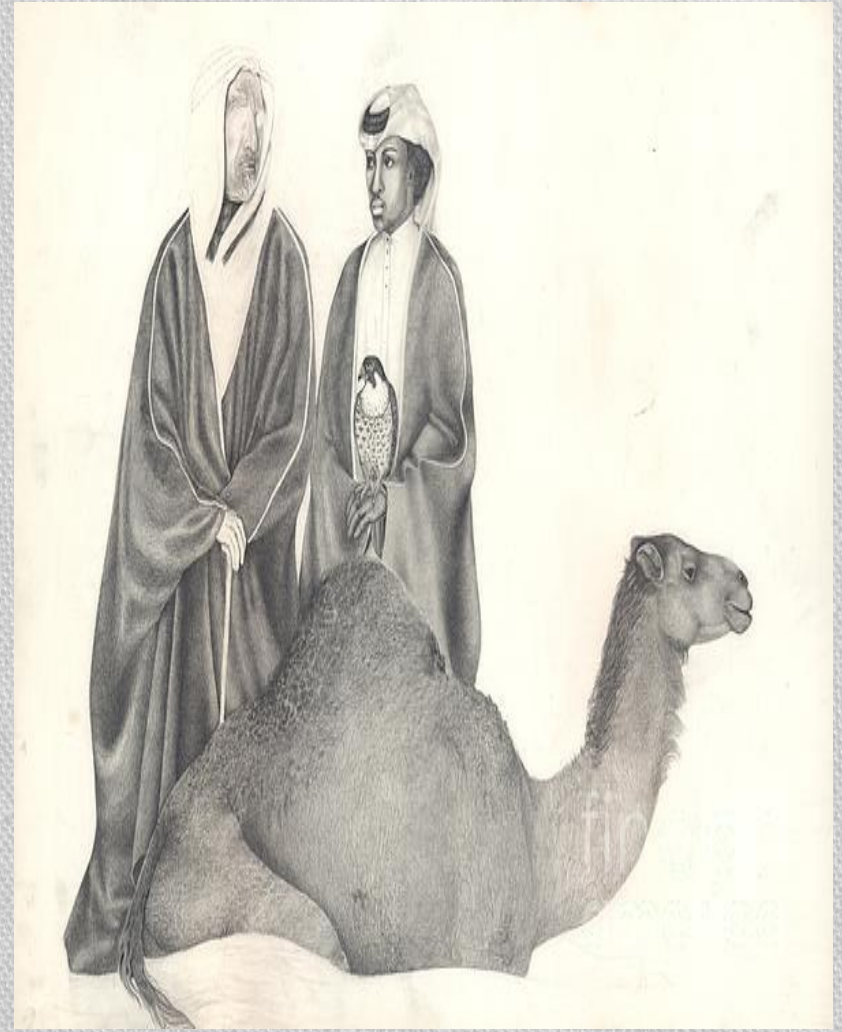


Arabia at the Time of Muhammad
Chapter 11, *Ways of the World: A Brief Global History with Sources*, First Edition
Copyright © 2011 by Bedford/St. Martin's
Page 475

- Originated on the Arabian Peninsula
- Had long been inhabited by nomadic Arabs = the Bedouins
- Located along important trade routes → Indian Ocean, Mediterranean Sea, etc.
- Gave rise to large commercial cities

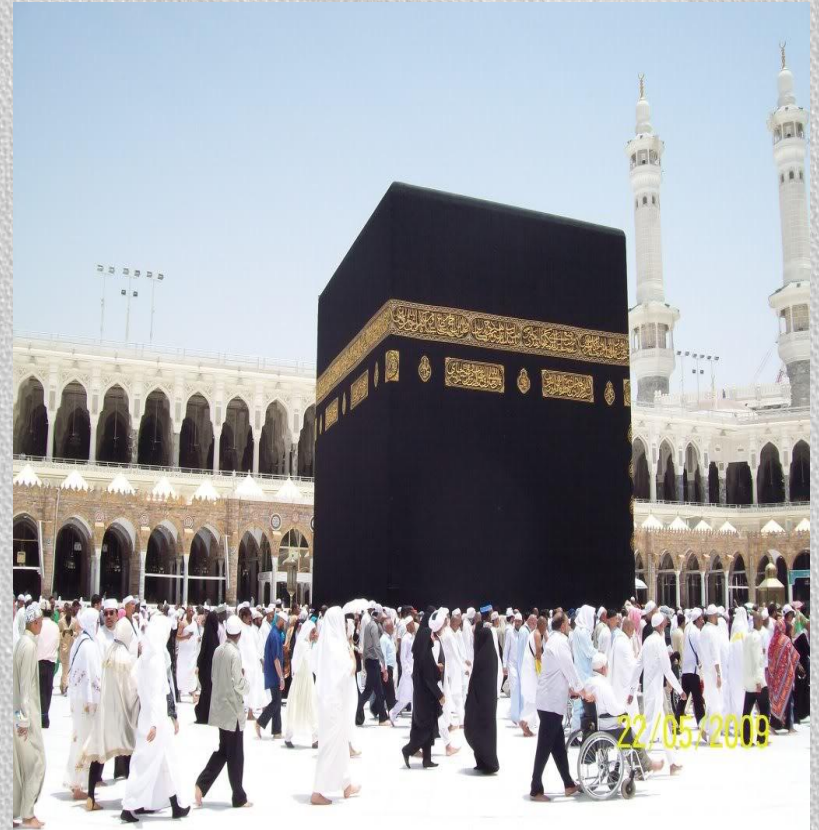
Bedouins

- Herded sheep and camels
- Lived in fiercely independent clans and tribes
- Often engaged in violent wars with each other
- Variety of gods and ancestor/nature spirits
- Valued personal bravery and group loyalty



Mecca

- Major commercial city
- Site of the Kaaba = most important religious shrine in Arabia
 - Housed representations of about 360 deities
- Ruling tribe of Mecca = the Quraysh
 - Controlled access to the Kaaba
 - Gained wealth by taxing local trade



Arabia – Connections to the World

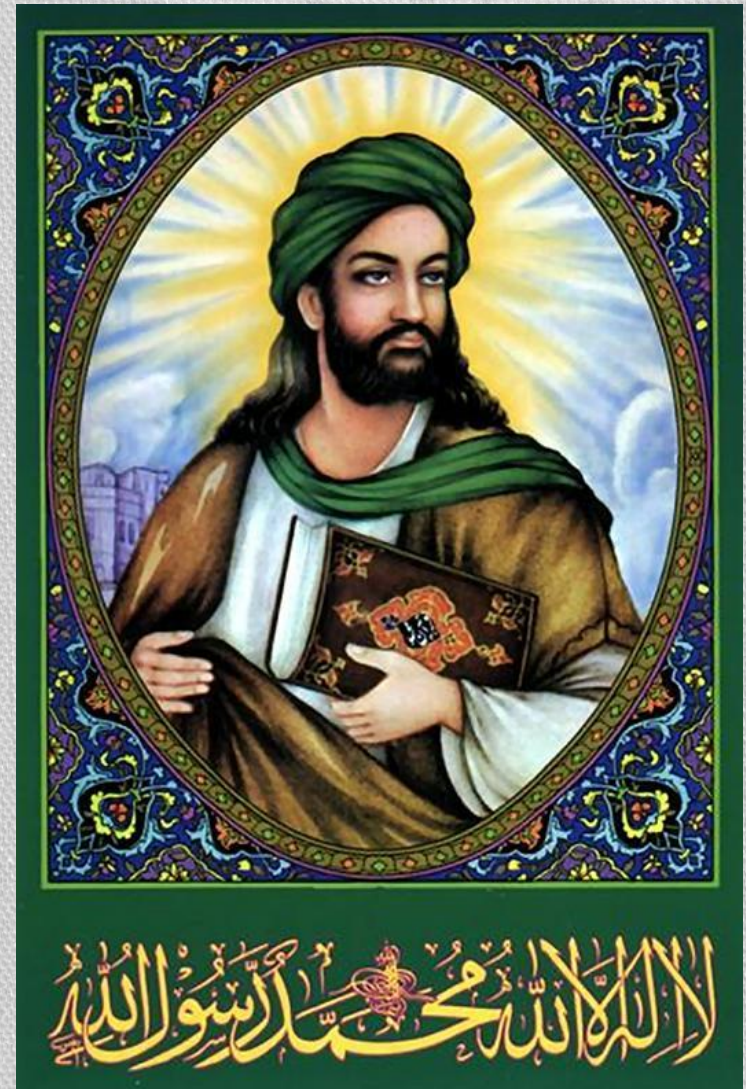


Arabia at the Time of Muhammad
Chapter 11, *Ways of the World: A Brief Global History with Sources*, First Edition
Copyright © 2011 by Bedford/St. Martin's
Page 475

- Participation in long-distance trade
- Location between the Byzantine Empire (to the northwest) and the Persian Empire (to the northeast)
- Result = many Jews, Christians, and Zoroastrians lived among the Arabs in Arabia
- Many of their monotheistic ideas began to influence the Arabs

The Messenger

- Muhammad (570 – 632 CE)
- Born in Mecca
- From a Quraysh family
- A shepherd and a trader
- Troubled by the religious corruption and social inequalities of Mecca
- Often withdrew into the mountains to meditate
 - 610 CE = he had an overwhelming religious experience
 - (Similar to the Buddha and Jesus)
 - Became convinced he was Allah's messenger to the Arabs

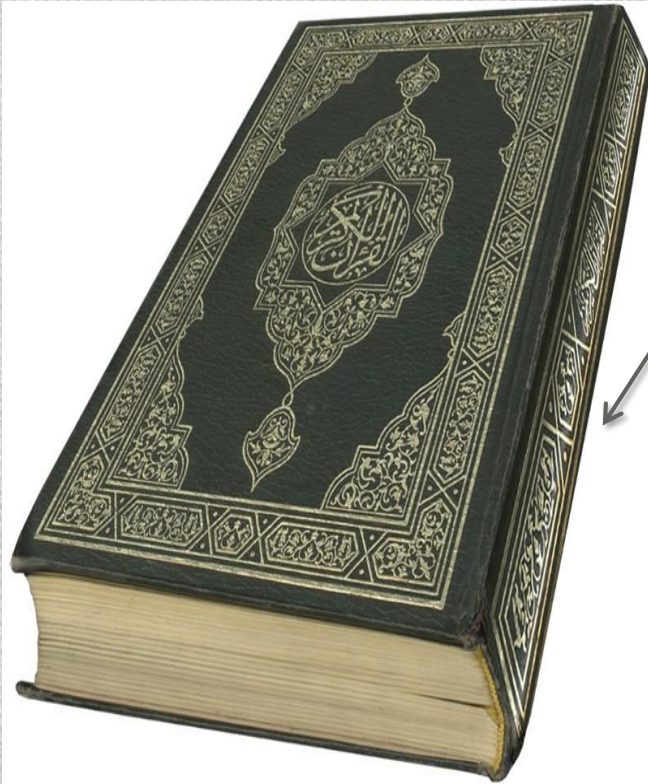


The Messenger



- Muhammad claimed to be the “seal of the prophets”
- Meant he was the last in a long line of prophets, including Abraham, Moses, Jesus, and others
- Said he had God’s FINAL revelation to humankind
- Wasn’t trying to start a new faith
- More of an invitation to return to the old and pure religion of Abraham

The Message



- Muhammad's revelations began in 610 CE and continued for the next 22 years
- Recorded in the Quran = the sacred scriptures of Islam
- Monotheistic → Allah is the only God
 - All-powerful Creator
 - Good, just, and merciful
 - Rejected the other deities housed in the Kaaba
 - Rejected Christian idea of the Trinity

The Message

- The Quran rejected:
 - Hoarding of wealth and materialism
 - Exploitation of the poor
 - Corrupt business practices
 - Neglecting widows and orphans
 - Abuse of women
- The Quran demanded:
 - Social justice
 - Equality
 - Aid to the poor



The Message



- Primary obligation of all believers = submission to Allah
- Not only an individual or spiritual act, but also involved the creation of a whole new society
- *Umma* = the community of all believers
 - Just and moral society of Islam
 - Would replace tribal, ethnic, or racial identities

The Message: 5 Pillars of Islam

1) Faith: “There is no god but Allah, and Muhammad is the messenger of God.”

2) Prayer: Should be performed 5 times daily while facing in the direction of Mecca

3) Almsgiving: Supporting the poor and needy of the community

4) Fasting: Occurs during month of Ramadan; no food, drink, or sexual relations from dawn to sundown

5) The Hajj: Pilgrimage to Mecca



The Message: The 6th Pillar



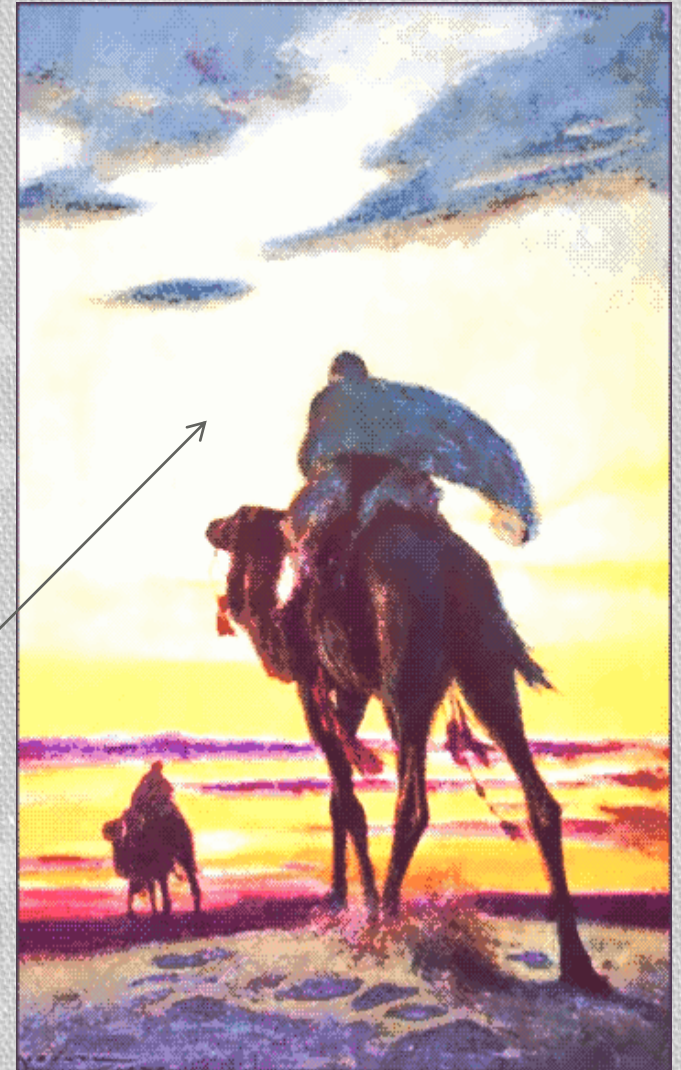
versus



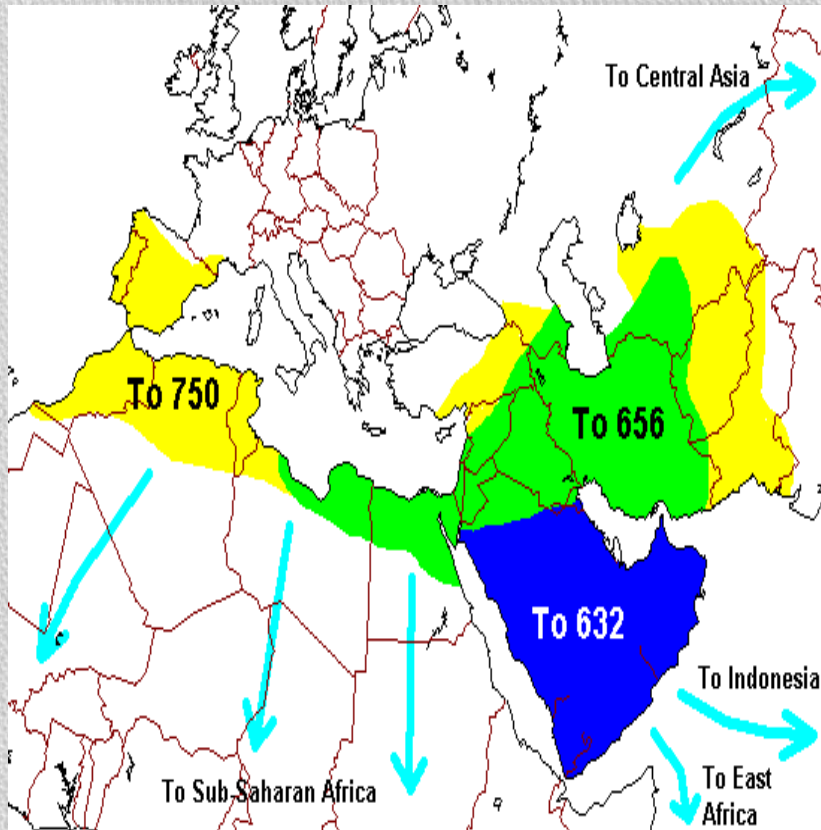
- *Jihad* = “struggle”
- “Greater jihad” = interior personal effort to avoid greed and selfishness, and to strive toward living a God-conscious life
- “Lesser jihad” = “jihad of the sword” = belief that the Quran authorized armed struggle against the forces of unbelief and evil
- In order to: establish Muslim rule and defend the *umma* from the threats of infidel aggressors

Transformation of Arabia

- Muhammad's message soon attracted opposition from Mecca's elite families; they didn't like his:
 - Claim to be the "messenger of Allah"
 - Strict monotheism
 - Call for social reform
 - Condemnation of business practices
 - Disloyalty to his own tribe (the Quraysh)
- Caused Muhammad and his followers to go to Medina
 - This is where the *umma* took shape



The Islamic Community



- Muhammad = both religious and political leader; also led the military
- Islamic community expanded throughout Arabia by:
 - Military conquest
 - Marriage alliances with leading tribes
 - Voluntary conversion
- By 632 (time of Muhammad's death), most of Arabia had come under Islamic control

Islamic Law

- No distinction between religious law and civil law
- ONE LAW = the *sharia*
- Regulated every aspect of life

