

# INDIGENOUS PEOPLES OF AUSTRALIA AND NEW ZEALAND

## Australia

- The **Aborigines** were the first humans to live in Australia.
- The Aborigines likely migrated from Southeast Asia at least 40,000 years ago.
- Early Aborigines were nomads—fishers and hunters—who believed it was their duty to preserve the land.

## New Zealand

- New Zealand's first settlers came from other Pacific islands around 1,200 years ago.
- The **Maori**—descendants of the early settlers—settled throughout New Zealand.
- The Maori were mainly fishers and hunters, but also farmed.

# AUSTRALIA'S NATIVE PEOPLE

## The Aborigines

- Migrated from Asia at least 40,000 years ago
- Nomadic people, never established permanent settlements
- Hunted with boomerangs







The word "**aboriginal**" means "the first" or "earliest known".

The Aborigines do not identify themselves as aboriginals but recognize each other based on their clan or tribe or the sub group of their language.







## TRADITIONAL ABORIGINAL MUSIC AND ART

The didgeridoo is commonly considered the national instrument of Aboriginal people, and it is claimed to be the world's oldest wind instrument





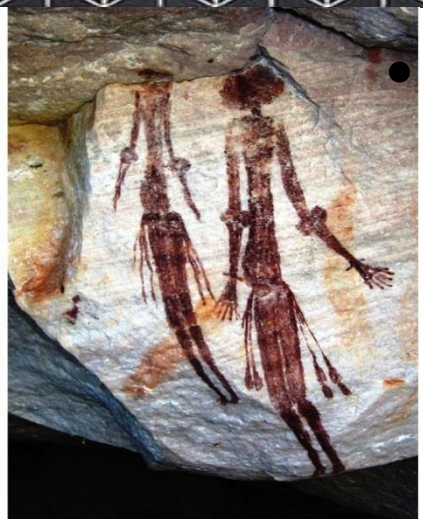
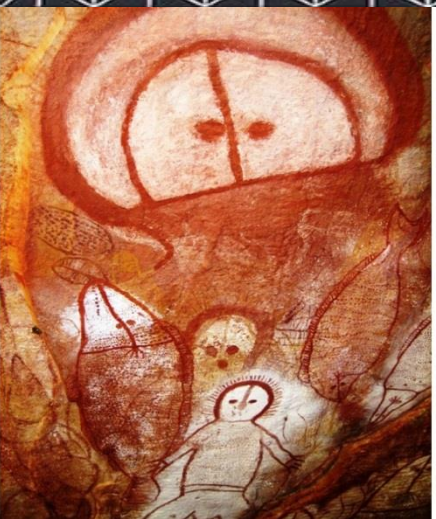


## Dreamtime Stories:

- Australian Aborigines created stories to teach others about Dreamtime—the creation. These stories taught about life, love, marriage, hunting, gathering, warfare, and death.
- Storytelling, along with art, singing and dancing, was the traditional way to educate about their history, cultures, and laws.
- The "Dreamtime", the mythological past, was the time when spirit ancestors had travelled throughout the land, giving it its physical form, and setting down the rules to be followed by the Aboriginals.







- The indigenous people of Australia, or Aborigines, use dot painting as a form of storytelling. With dots of paint traditionally made from natural pigments, they create patterns and images of plants and animals that represent their culture's creation myths, which date back tens of thousands of years.
- Aboriginal rock art is part of a tradition of painting and engraving that stretches back over 40,000 years! Many elders believe that they were created by spirits to keep records of their history.

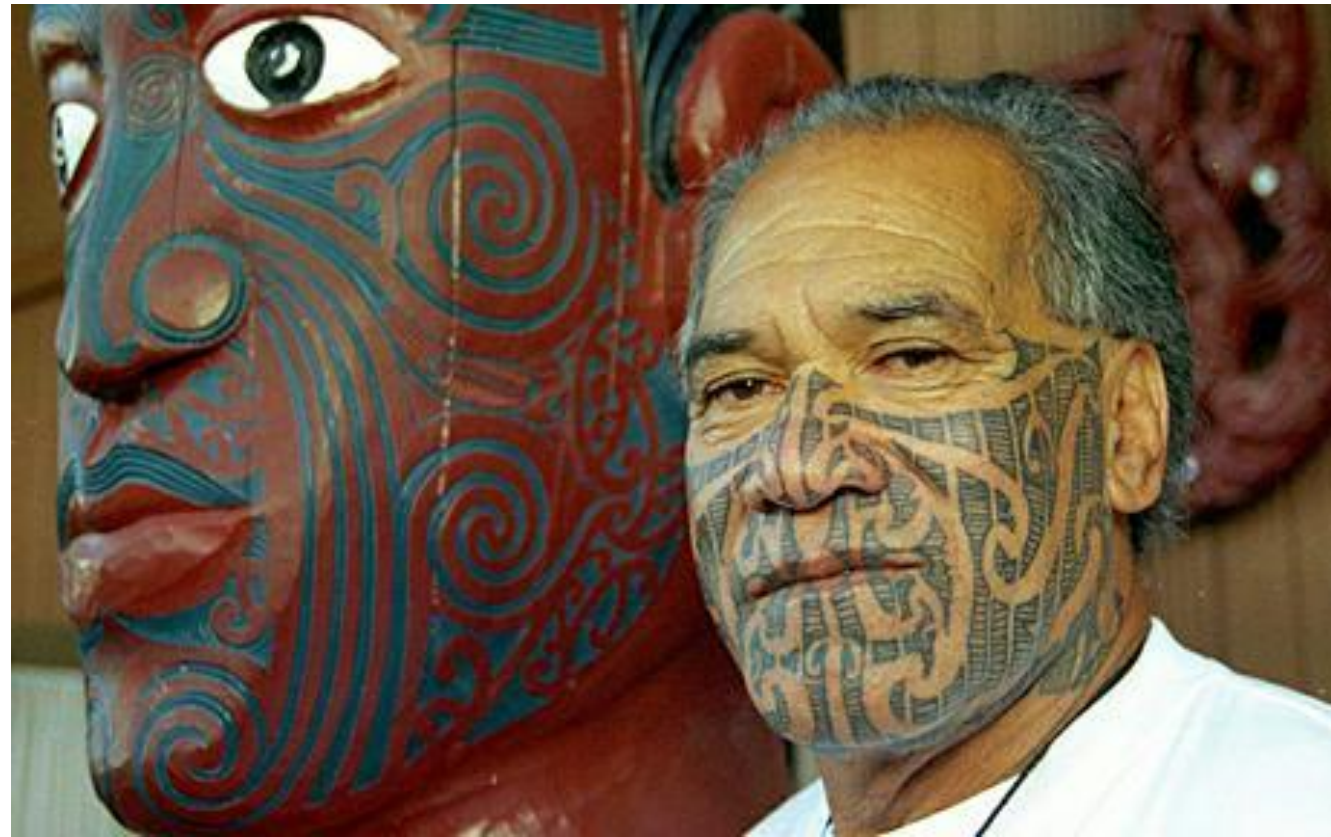




# NEW ZEALAND'S NATIVE PEOPLE

## The Maori

- Came from Polynesia to settle New Zealand
- Facial tattoos are a symbol of warriors bravery
- 





# Maori Culture

The Maori, the descendants of New Zealand's earliest settlers, lived in small settlements throughout the islands. Their rich culture and traditions are still alive in New Zealand today.

The *moko*, or tattoos, of Maori warriors were symbols of a warrior's bravery. They also helped intimidate the enemy during battle.

The Maori used elaborately carved war canoes to launch attacks on their enemies.

Beautifully decorated storehouses served as a sign of a village's wealth and power. They often held weapons, tools, and foods.

Maori life centered around a village meetinghouse, where important gatherings like weddings and funerals were held.

**ANALYSIS SKILL** ANALYZING VISUALS

Based on the illustration, what elements were important in Maori culture?





# THE ARRIVAL OF THE EUROPEANS

## Australia

**In 1770 James Cook landed in Australia and claimed it for Britain.**

**Many of the first British settlers were prisoners.**

**British settlers took over the Aborigines land and many Aborigines died from diseases that the British introduced.**

**Gained its independence in the early 1900s**

**Member of the British Commonwealth of Nations**

## New Zealand

**In 1769 James Cook explored the main islands of New Zealand.**

**British settlers began to arrive in the early 1800s.**

**Became a part of the British Empire in 1840.**

**Tensions between the Maori and British settlers led to land wars.**

**Gained its independence in the early 1900s**

**Member of the British Commonwealth of Nations**



# PEOPLE

## Australia

**Most of British ancestry**

**Native Aborigines—small percentage of the total population**

- **Challenge to improve the economic and political status of Aborigines**

**Most Australians live in urban areas.**

**About 85 percent of the population lives in large cities along the coasts.**

## New Zealand

**Most of British ancestry**

**Native Maori—small percentage of the total population**

- **Challenge to improve the economic and political status of Maori**

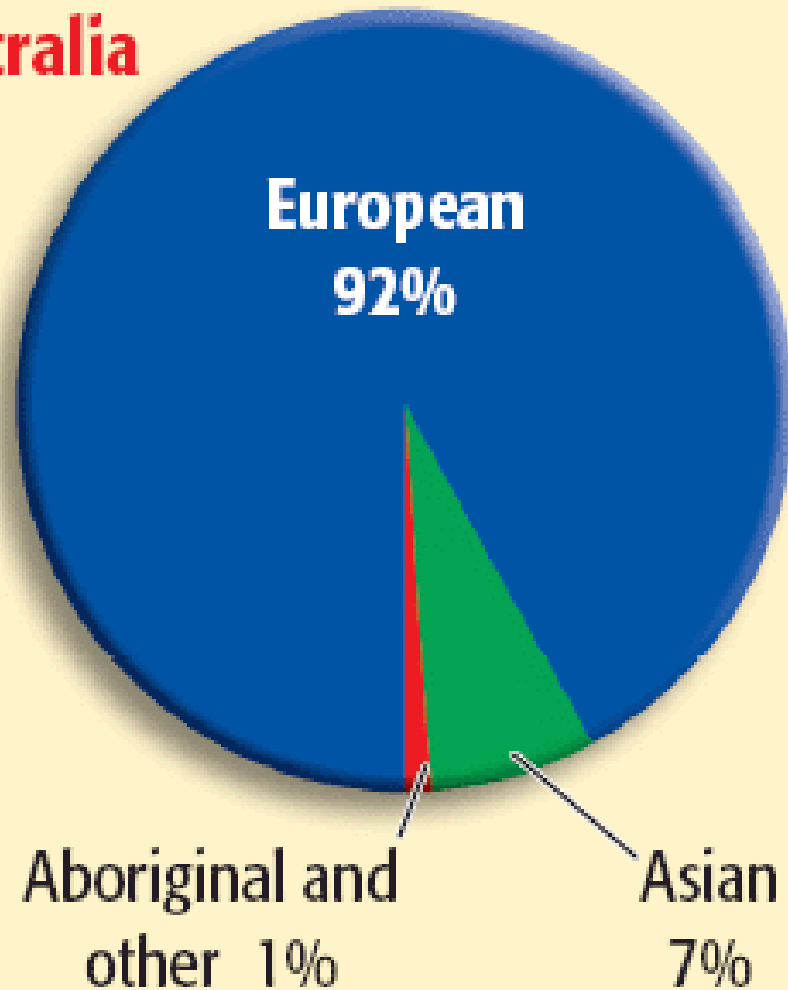
**Most New Zealanders live in urban areas.**

**A majority of the population lives on the North Island.**

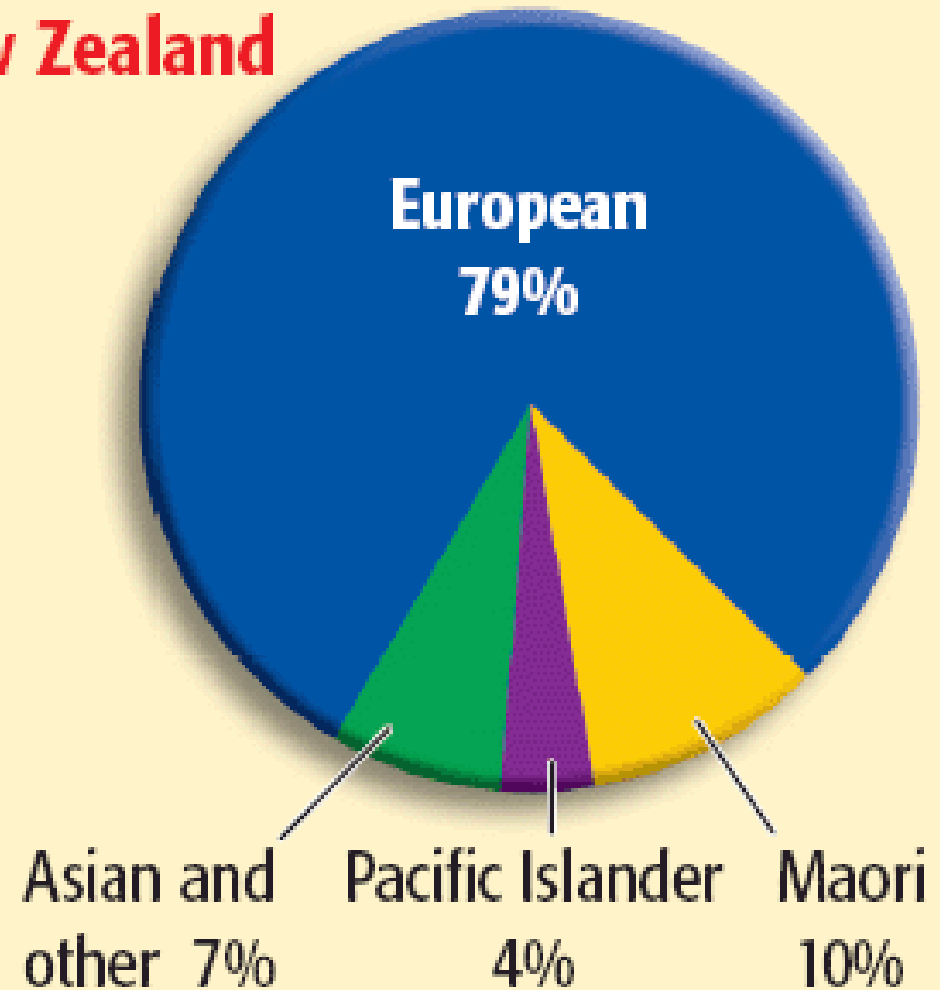


## Ethnic Groups in Australia and New Zealand

**Australia**



**New Zealand**





# GOVERNANCE

## Australia's Government

- British monarch is the head of state.
- Prime minister and Parliament run the government.
- Federal type of system like that of the United States



## New Zealand's Government

- British monarch is the head of state.
- Prime minister and Parliament run the government.
- A Bill of Rights protects the individual rights of citizens.



# COLONIZATION AND URBANIZATION

In the late 1700's and 1800's the British settled in the region bringing the English language and Christianity.

When gold was discovered the population soared.

Due to isolation the Pacific islands developed their own culture, language, and religions.

The British first used Australia as a penal colony because of the lack of prison space in the UK.





The Outback is a physical “no-mans land”. Also called “The Bush”, the environment is not as human friendly as is Australia’s coasts.

Therefore, the population numbers of the outback are very sparse.

Because of the physically rugged land, there are few towns; such as Cuber Peaty.



## THE OUTBACK



# Colonization of New Zealand

Settled & colonized by the British

Large producer of wool & other sheep related products



# ANTARCTICA

Twice the size of Australia

An ice covered plateau with ice up to 2 miles thick in places, & ice covers 95% of the continent





# EXPLORATION OF ANTARCTICA FOR SCIENTIFIC RESEARCH



**In 1775 James Cook first sighted the Antarctic Peninsula.**

**In the 1800s explorers first investigated Antarctica.**

- Many explorers wanted to discover the South Pole.
- In 1911 a team of Norwegian explorers reached the South Pole.

**Several countries claim parts of Antarctica.**

**In 1959 the International Antarctic Treaty was signed to preserve the continent “for science and peace.”**

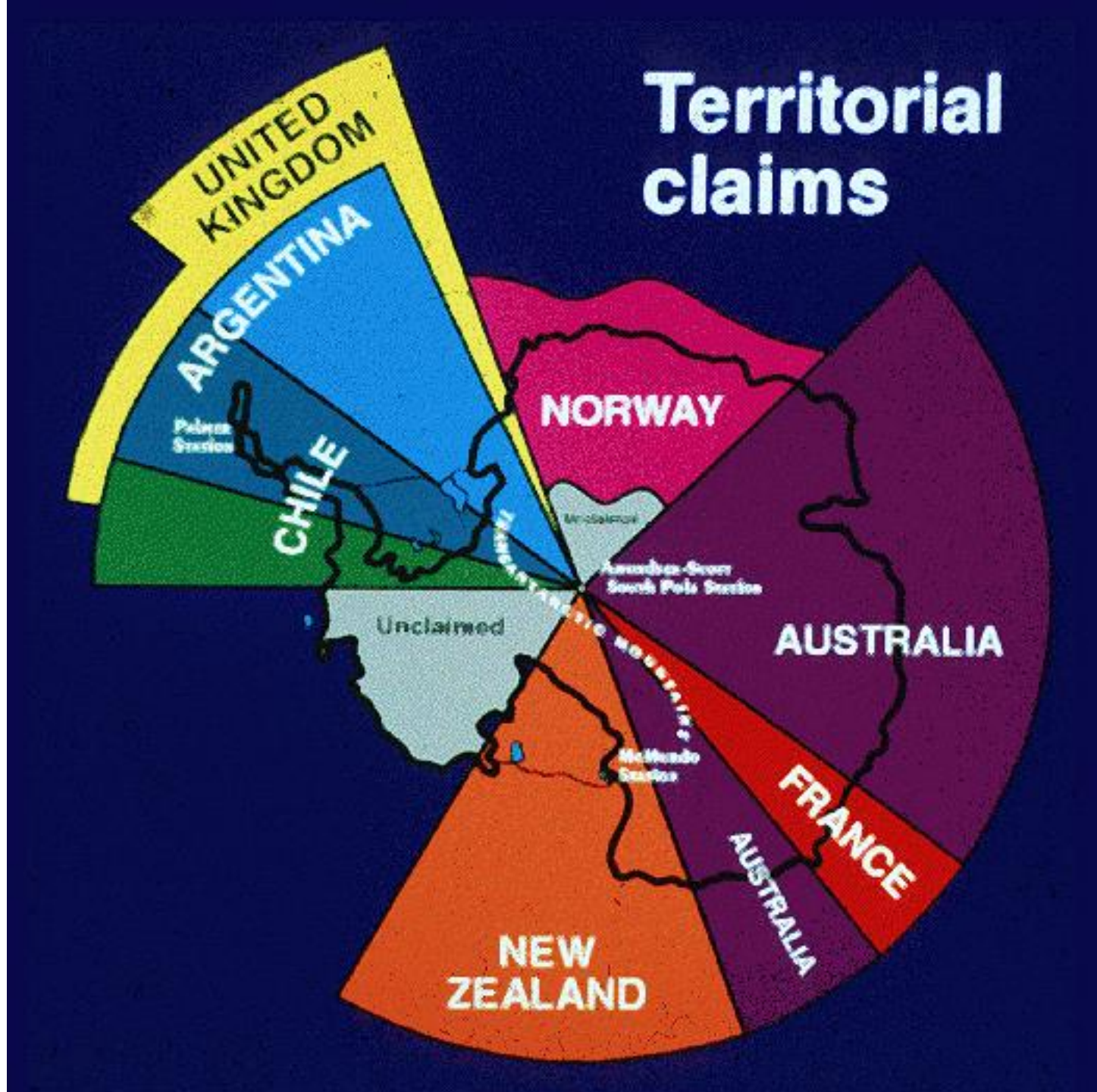
- Military activity is banned.

**The entire continent is set aside for research.**

The Antarctic Treaty of 1961 divided the continent up between a number of nations.

These nations use their designated areas on the continent mainly to conduct scientific research.

Nations pledged to keep Antarctica clean and free of pollution.

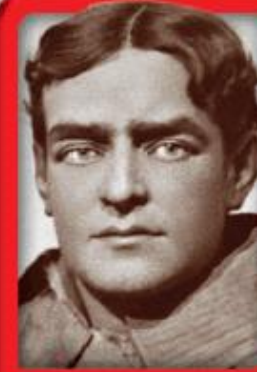




## Antarctic Exploration



### BIOGRAPHY



### Sir Ernest Shackleton

(1874–1922)

Irish-born Ernest Shackleton was one of several early explorers of Antarctica. Shackleton led a British expedition in 1907–1909 that climbed Mt. Erebus, an active volcano, discovered the Beardmore Glacier, and came within 97 miles of the South Pole—the farthest south anyone had ever been.

**In the early 1900s several expeditions set out to find the South Pole. The first to reach the pole were members of a Norwegian expedition led by Roald Amundsen. In this photo a member of the Norwegian expedition poses with his team of dogs near the flag that marks the South Pole.**

**Indigenous people**

**Aborigine**

**Maori**

**Dreamtime**

**Ayers Rock/ Uluru**

**Great Barrier Reef**

**Antarctic Treaty of 1961**

**Parliamentary monarchy**

**British Commonwealth of Nations**

**Outback**

**Coral Sea**

**Great Victoria Desert**

**Digeridoo**

**James Cook**

**Penal Colony**

**Stolen Generations**

**South Pole**



# Australia, Oceania



0 500 Nautical Miles

This is a royalty free image that can be used for your personal, corporate or education projects. It can not be resold or freely distributed, if you need an editable PowerPoint or Adobe Illustrator